

DURABELLA

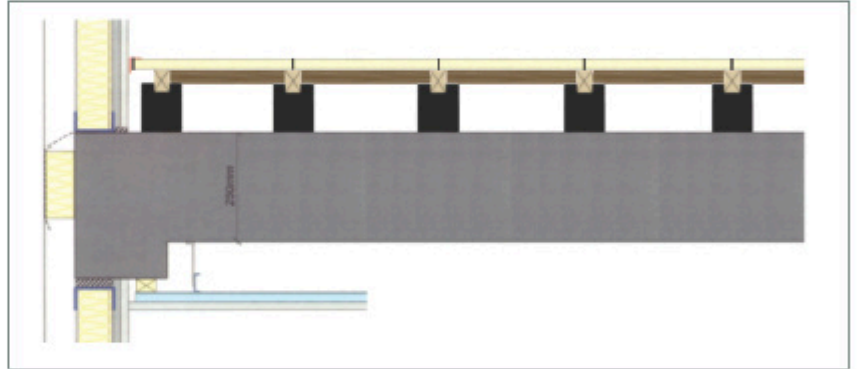
DATA SHEET F.A.T.1

Durabella Ireland
 23 Maple Drive
 The Paddocks
 Termon Abbey
 Drogheda
 Co. Louth

OFFICE & RETAIL ENVIRONMENTS

The access floor has been developed for areas where cable management is required throughout the entire floor area and where it is likely to be extensively adjusted throughout the life of the floor.

TIMBER SYSTEMS : PC30 / PC38

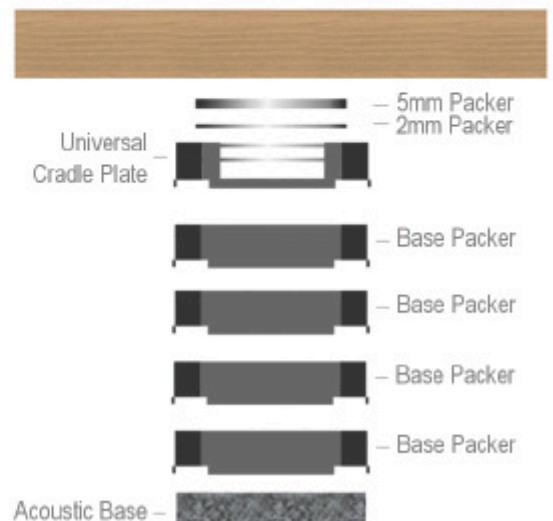


Accessibility in full access floors can be adapted to accommodate all aspects of modern office.

Some Durabella full access pedestals have been developed to accommodate isolation pads, protecting the floor from any surrounding vibration created within the main structure of the building; this can be particularly useful in factory, airport or high road traffic environments and will help protect any sensitive computer systems from potentially damaging vibration. Durabella full access anti-vibration pads have the ability to resist vibration under load.

The Durabella full access support systems are designed for applications where the sub floor is out of level, it is an extension of the principle applied to the partial full access flooring system. It is particularly effective in overcoming difficult site problems and can be laid with an overall depth between 55mm and 500mm.

The straight lay full access batten system can be used in conjunction with screed finishes or where the sub-base is level. In both cases cables run between the battens. The key to effective full access flooring is to ensure an understanding of workstations, permanent walkways and partitioning requirements, prior to the installation of the floor.



Access Ducting

With the full access systems, access ducting will usually be positioned at right angle to the batten line. Trunking and Services should be positioned to allow a central batten support down the length of the duct to support the 600mm removable panel. Alternatively battens may be placed at right angles butting up to the trunking thus giving appropriate support to the duct panel.

Access Duct Panels

Access duct panels for the full access systems are 30mm thick in size and 1200mm x 600mm or 600mm x 600mm square edge profile. A lifting device can be fitted in every fourth panel or these can be inserted in each panel with countersunk screws and cups so that they may be lifted to gain access to the subfloor cavity.

Service Installation

Service trunking which will contain electrical, telephone and other cables may be laid in the subfloor cavity. If it is installed before installation of the flooring system it must be set out on appropriate grid for the spacing of the batten/cradles. Advice on positioning of the trunking together with the degree of flexibility provided by the different floor systems is freely available upon request from our Technical Department or from our Technical Sales Representative.

Cut-Outs For Outlet Boxes

Panels can be cut to accommodate outlet boxes with or without rebated edges. If these are cut in the factory they must be cut in a set position in the board, alternatively they may be made on site during the installation process, between lines of battens. Appropriate floor support must be placed in the cavity in the vicinity of the cut-out where required.

Uniformly Distributed Loading Table for Durabella Access Floors

Product code	Description	Loadings	Board	Void Use	Sub Structure	Access	Finish	Application
P.A.T.1	Partial Access 22mm Chipboard sheet material on timber bearers with timber or plastic Pedestal at 400c for Light loading 300c for medium	Light	22mmT&G Chipboard	All M&E and plenum suitable	Elevated timber or plastic pedestal levelled with shims and screw fixed	standard 400mmx400mm access hatches upto 1m x 400mm and /or service/socket boxes	Carpet, Hardwood, Vinyl, Resin	Office, School, Hospital, Retail
P.A.P.T.1	Partial Access 22 Ply sheet material on timber bearers with timber or plastic Pedestal at 400c for medium loading 300c for Heavy	Medium	22mmT&G Ply	All M&E and plenum suitable	elevated timber or Plastic pedestal levelled with shims and screw fixed	standard 400mmx400mm access hatches upto 1m x 400mm and /or service/socket boxes	Carpet, Hardwood, Vinyl, Resin, Ceramic & Stone	Office, School, Hospital, Retail
P.A.T.F.1	Partial Access 22mm Chipboard sheet material with bonded foil to under side of board on Metal Pedestals at 400c for Light loading 300c for medium, reduced spread of flame to void.	Light	22mmT&G Chipboard Foil to underside only all edge foil taped	All M&E and plenum suitable	Adjustable All metal pedestal	standard 400mmx400mm access hatches upto 1m x 400mm and /or service/socket boxes	Carpet, Hardwood, Vinyl, Resin	Office, School, Hospital, Retail
P.A.P.T.F.1	Partial Access 22mm Ply sheet material with bonded foil to under side of board on Metal Pedestals at 400c for medium loading 300c for medium, reduced spread of flame to void.	Medium	22mmT&G Ply Foil to underside only all edge foil taped	All M&E and plenum suitable	Adjustable All metal pedestal	standard 400mmx400mm access hatches upto 1m x 400mm and /or service/socket boxes	Carpet, Hardwood, Vinyl, Resin, Stone	Office, School, Hospital, Retail
P.A.T.S.1	Partial Access 22mm Chipboard sheet material with bonded .5mm steel to underside of board on Metal Pedestals at 600c for Light loading & 400c for Heavy loading, Zero spread of flame to void.	Medium	22mmT&G Chipboard Steel to underside only all edge foil taped	All M&E and plenum suitable	Adjustable All metal pedestal	standard 400mmx400mm access hatches upto 1m x 400mm and /or service/socket boxes	Carpet, Hardwood, Vinyl, Resin, Stone	Office, School, Hospital, Retail
P.A.P.S.1	Partial Access 22mm ply sheet material with bonded .5mm steel to under side of board on Metal Pedestals at 600c for Light loading & 400c for medium loading, Zero spread of flame to void.	Medium	22mmT&G Ply Steel to underside only all edge foil taped	All M&E and plenum suitable	Adjustable All metal pedestal	standard 400mmx400mm access hatches upto 1m x 400mm and /or service/socket boxes	Carpet, Hardwood, Vinyl, Resin, Stone	Office, School, Hospital, Retail
P.A.T.S.S.1	Partial Access 22mm Chipboard sheet material with bonded .5mm steel to under side and surface of board on Metal Pedestals at 600c for Medium loading & 400c for Heavy loading. Zero spread of flame to void.	Medium	22mmT&G Chipboard Steel top & underside, all edge foil taped	All M&E and plenum suitable	Adjustable All metal pedestal	standard 400mmx400mm access hatches upto 1m x 400mm and /or service/socket boxes	Carpet, Hardwood, Vinyl, Resin, Stone	Office, School, Hospital, Retail
P.A.T.P.S.S.1	Partial Access 22mm Ply sheet material with bonded .5mm steel to under side and surface of board on Metal Pedestals at 600c for Heavy loading. Zero spread of flame to void.	Heavy	22mmT&G Ply Steel top & underside all edge foil taped	All M&E and plenum suitable	Adjustable All metal pedestal	standard 600mmx600mm access hatches upto 1m x 600mm and /or service/socket boxes	Carpet, Hardwood, Vinyl, Resin, Stone	Office, School, Hospital, Retail
P.A.C.1	Partial Access 22mm Cement Particle sheet material on Metal Pedestal at 600c for medium loading 400c for Heavy	Medium	22mmT&G Cement Particle Board	All M&E and plenum suitable	Adjustable All metal pedestal	standard 400mmx400mm access hatches upto 1m x 400mm and /or service/socket boxes	Carpet, Hardwood, Vinyl, Resin, Stone	High traffic Retail
P.A.C.S.1	Partial Access 22mm Cement Particle sheet material on Metal Pedestal with .5mm steel to underside at 600c for medium loading 400c for Heavy	Medium	22mmT&G Cement Particle Board	All M&E and plenum suitable	Adjustable All metal pedestal	standard 400mmx400mm access hatches upto 1m x 400mm and /or service/socket boxes	Carpet, Hardwood, Vinyl, Resin, Stone	High traffic Retail
P.A.C.A.S.1	Partial Access 22mm Cement Particle sheet material on Metal Pedestal with .5mm steel to underside all edge detail raised and sealed to facilitate poured screeds	Medium	22mmT&G Cement Particle Board	All M&E and plenum suitable	Adjustable All metal pedestal	standard 400mmx400mm access hatches upto 1m x 400mm and /or service/socket boxes	Carpet, Hardwood, Vinyl, Resin, Stone	Large retail / Industrial areas only
F.A.S.T.1	600 X 600 X 30 Steel encased panel on steel pedestals	Medium	30x600x600 panel	All M&E and plenum suitable	Adjustable All metal pedestal	Full 600x600 Steel encased Timber	Carpet Tiles Only	Office
F.A.T.1	Full Access timber floor with 600 x 600 x30/38mm Panels	Light/Medium	30x600x600 panel	All M&E suitable	Elevated timber or plastic pedestal levelled with shims and screw fixed	Full 600x600 Timber only	Carpet Tiles Only	Office